

ASSMANG 2ND RAIL TAKE OFF

KATHU, NORTHERN CAPE

PROJECT TYPE: BULK EARTHWORKS AND ROADS

CLIENT:
Assmang (Pty) Ltd

VALUE:
R45 million

CONSULTANTS:
DRA Mineral Project (Pty) Ltd
Hatch (Pty) Ltd

PROJECT DURATION:
6.5 months

DATE OF PROJECT:
March 2011

PROJECT DESCRIPTION:

The works involves the construction of 5.3km Railway line and associated works for the Doubling of the Arrivals and Departure Line to increase the Export Capacity. This includes the Construction of a Concrete Underpass, Culverts and Relay Rooms.

Construction of approximately 5.3km of a Railway Line that is approximately 2m High

1. 130,000m³ Bulk Earthworks e.g. Stripping Topsoil, Roadbed preparation, Bulk fill and Cut to Spoil
2. 45,000m³ Layerworks consist of a Layer A, Layer B, Lower Sub-Ballast and Upper Sub-Ballast Layers.
3. 4/3m x 2.5m Service Underpass consisting of 270m³ 30Mpa Concrete
4. The Design and Construction of a Retaining Wall at the Road Over Rail consisting of 210m³ of 10Mpa Concrete and 250m³ of 30Mpa Concrete.
5. The Construction of Kiosk Building
6. 500m of Stormwater Culverts
7. Crushing and Screening of 35,000m³ of material



ASSMANG – CONTRACT A

KATHU, NORTHERN CAPE

PROJECT TYPE: EARTHWORKS

CLIENT:
Assmang (Pty) Ltd

VALUE:
R94 million

CONSULTANTS:
DRA (Pty) Ltd

PROJECT DURATION:
12 months

DATE OF PROJECT:
June 2006

PROJECT DESCRIPTION:

Mass earthworks & layerworks for the construction of the Processing Plant, ROM and Product Loadout Areas of the Khumani Iron Ore Mine (earth moved = 1,080,000.00m³)

Installation of services including subsoils, water reticulation, fire water reticulation & sewer reticulation (services installed = 31km)



ASSMANG – CONTRACT B

KATHU, NORTHERN CAPE

PROJECT TYPE: EARTHWORKS

CLIENT:
Assmang (Pty) Ltd

VALUE:
R112 million

CONSULTANTS:
DRA (Pty) Ltd

PROJECT DURATION:
20 months

DATE OF PROJECT:
June 2006

PROJECT DESCRIPTION:
Construction of Bulk Earthworks (1,350,000m³)
and related Civil Works.

Bulk services for workshop, primary crusher,
secondary crusher and offices.

Access and internal roads incl. surfacing.

Small Works incl. signage



ASSMANG – CONTRACT C

KATHU, NORTHERN CAPE

PROJECT TYPE: EARTHWORKS

CLIENT:
Assmang (Pty) Ltd

VALUE:
R43 million

CONSULTANTS:
DRA (Pty) Ltd

PROJECT DURATION:
10 months

DATE OF PROJECT:
June 2006

PROJECT DESCRIPTION:

The construction of a rail siding intended for the export of iron ore from Khumani Iron Ore Mine via Saldana Bay.

Works included mass earthworks (540,000m³), layer works (80,000m³) and the construction of a rail over road bridge and various smaller structures.



ASSMANG – DOUBLING OF RAIL BALLOON

KATHU, NORTHERN CAPE

PROJECT TYPE: BULK EARTHWORKS & CONCRETE

CLIENT:
Assmang (Pty) Ltd

VALUE:
R44 million

CONSULTANTS:
DRA (Pty) Ltd

PROJECT DURATION:
6 months

DATE OF PROJECT:
January 2010

PROJECT DESCRIPTION:

Construction of the second rail balloon consisting of civil and earthworks for 5 040m long rail balloon of which 1 540m includes the widening of existing formation (in use daily) to provide for the new loading line and new swing set loop



ASSMANG – KEP: LOCAL SIDING

KATHU, NORTHERN CAPE

PROJECT TYPE: CIVIL WORKS

CLIENT:
Assmang (Pty) Ltd

VALUE:
R123 million

CONSULTANTS:
DRA (Pty) Ltd
Hatch (Pty) Ltd

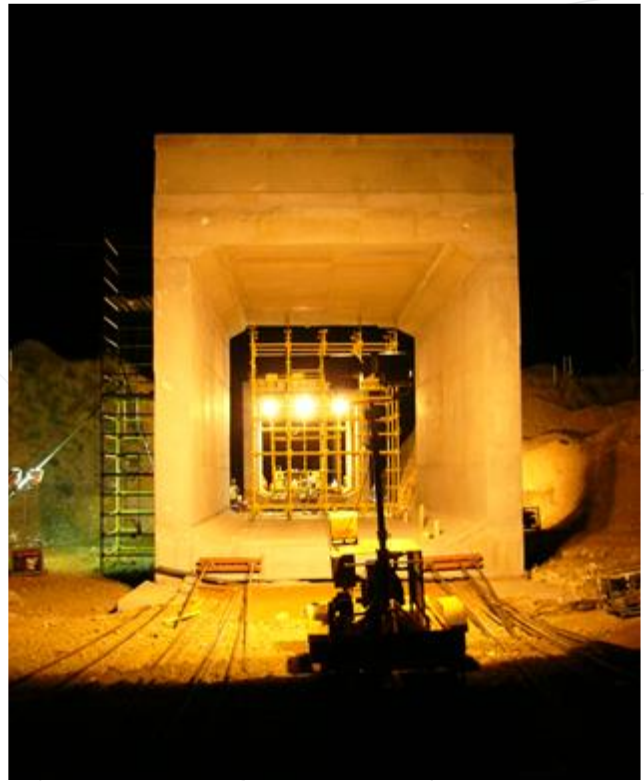
PROJECT DURATION:
11 months

DATE OF PROJECT:
April 2009

PROJECT DESCRIPTION:

The work entails the construction of a new local siding taking off from the Transnet Freight Rail (Hotazel – Postmasburg) Main line and tying into the existing Khumani loop. Construction works include:

- Earthworks: 800,000m³
- Layers: 90,000m³
- 7no Drainages structure (620m ranging between 1.5x1.5 to 3.0x3.0)
- Rail over Road bridge
- Rail under Rail Bridge (5.8x5.7m Jacked through an existing embankment)
- Deviation Road & ancillaries
- Loco Motive shed (Structural Steel & Sheeting)



ASSMANG – PRODUCT YARD

KATHU, NORTHERN CAPE

PROJECT TYPE: EARTHWORKS AND CIVIL WORKS

CLIENT:
Assmang (Pty) Ltd

VALUE:
R89 million

CONSULTANTS:
DRA (Pty) Ltd

PROJECT DURATION:
12 months

DATE OF PROJECT:
January 2011

PROJECT DESCRIPTION:
Bulk Earthworks and Civil Works to the Railway Siding

